



ACCOMMODATION GUIDE



CARNIVAL SPLENDOR

CARNIVAL LUMINOSA

TRAVEL AGENT USE ONLY



Scan the QR code to check out more highlights.



CARNIVAL SPLENDOR FROM SYDNEY

1 Carnival WaterWorks™

Whirl down the Green Lightning thrill-slide that begins with an impressive 11.3 metre free-fall drop, or explore Splashy Cove – the perfect spot for the little ones to splash around.

2 Yummy Eats

Take a big bite out of one of the best burgers at sea, brought to you by none other than celebrity chef Guy Fieri. Be tempted by traditional, Indian delicacies at Masala Tiger.

3 Thirst Quencher

RedFrog Pub is our laid-back, no-worries, oh-so-lively Caribbean Island-Inspired pub. Head poolside with the RedFrog Rum Bar, where the frog keeps the fun hopping day and night.



MEET THE FUN SHIPS

CARNIVAL LUMINOSA FROM BRISBANE

1 Taco-bout Delicious

Enjoy homemade tacos and burritos stuffed to order with taste-bud-tingling Mexican flavours.

2 Sunset Bar

Soak in the views as well as your fave cocktail! Sunset Bar is sure to be your new go-to spot.

3 Ocean Plaza

Get your nightlife — not to mention your daytime — on at Ocean Plaza. An indoor entertainment spot that plays host to live music events, trivia, dance classes, games and more.



Scan the QR code to check out more highlights.



ROOM TO BE CHOOSY

	Interior	Ocean view	Balcony	Suite	Spa Suites	Captain Suites~
King / twin bed	•	•	•	•	•	•
Ensuite bathroom	•	•	•	•	•	•
Room clean serviced daily*	•	•	•	•	•	•
Air-conditioning	•	•	•	•	•	•
Fresh beach towels daily	•	•	•	•	•	•
Wardrobe	•	•	•	•	•	•
Hair dryer	•	•	•	•	•	•
Body wash	•	•	•	•	•	•
Shampoo	•	•	•	•	•	•
Bathrobes*	•	•	•	•	•	•
Safety deposit box	•	•	•	•	•	•
Window with a view		•	•	•	•	•
Private balcony			•	•	•	•
Larger sitting area				•	•	•
Spa bath				•	•	•
Priority check-in				•	•	•
Private spa access					•	
Sleeps 5 guests						•
Separate bedroom & lounge room						•

*Upon request room can be cleaned twice daily. Bathrobes are only available in Cloud 9 Spa cabins.

AMBULATORY AND FULLY ACCESSIBLE STATEROOMS

Ambulatory Staterooms

These staterooms are designed for guests who may utilise a wheelchair or similar assistance device (e.g for distance). It includes features such as grab bars and shower seats in the bathrooms.

Fully Accessible Staterooms

These staterooms are designed for guests with highly limited or no mobility who utilise wheelchairs or other similar assistive devices. It includes features such as turning space; accessible routes throughout the stateroom and accessible bathrooms.

Ambulatory Accessible Staterooms (AAC): Designed for use by guests with mobility limitations, who do not require the regular use of a wheelchair, scooter or any other assistive device. Ideal for guests who use: Canes, Walkers, Rollators, Manual/Folding Wheelchairs or 21" Scooters (who can step out of their device or use them for long distances/ at ports of call). *FULL TURN AROUND IN THE CABIN AND THE BATHROOM

Fully Accessible Staterooms (FAC): Designed for use by guests with highly limited or no mobility - who require the use of a wheelchair, scooter or other similar assistive device. Ideal for guests who require a cabin with fully accessible elements including turning space, accessible routes throughout the cabin and accessible bathrooms. *FULL TURN AROUND IN THE CABIN AND THE BATHROOM

Fully Accessible Staterooms – Single Side Approach

(FAC-SSA): Designed for use by guests with highly limited or no mobility - who require the use of a wheelchair, scooter or other similar assistive device. Ideal for guests who only need an accessible route and clear floor space on one side of the bed or between the beds in twin/king or twin only accommodations. *FULL TURN AROUND IN THE CABIN AND THE BATHROOM.

Qualifying Questions

What is the Guest Mobility?

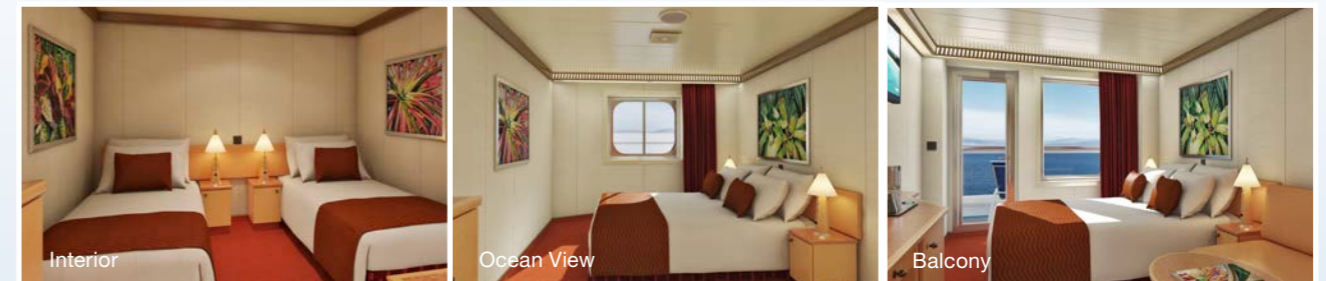
1. Mobile (able to walk)
2. Limited (able to take some steps)
3. No mobility (does not step out of device, uses at all times).

Do they use a wheelchair/scooter for?

1. Distance
2. Sometimes
3. All the time (they use while in the cabin or to access the bathroom)

What kind of wheelchair do they use?

1. Manual, electric or scooter
2. Does it collapse?



CARNIVAL SPLENDOR

INTERIOR

Interior Upper/Lower.....	1A
Porthole.....	PT
Interior.....	4A 4B 4C 4D 4E 4F 4G
Interior with Picture Window (obstructed views ..	4J

Cabin size: 15.1 m²

OCEAN VIEW

Ocean View.....	6A 6B 6C
Scenic Ocean View.....	6J
Scenic Grand Ocean View.....	6K

Cabin size: 16.9 m²

BALCONY

Balcony.....	8A 8B 8C 8D 8E 8F
Aft-View Extended Balcony.....	8M 8N
Premium Vista Balcony.....	9C

Cabin size ranges from 20.90 m² to 29.27 m²

SUITE

Junior Suite.....	JS
Ocean Suite.....	OS
Grand Suite.....	GS
Captain's Suite.....	CS

Cabin size ranges from 33.45 m² to 43.2 m²

CLOUD 9 SPA ACCOMMODATION

Interior.....	4S
Ocean View (obstructed views).....	6S
Balcony.....	8P 8S
Suite.....	SS

Cabin size ranges from 15.1 m² to 16.9 m²
Includes private access, special amenities and priority reservations at the Cloud 9 Spa.

CARNIVAL LUMINOSA

INTERIOR

Interior.....	4A 4B 4C 4D 4E 4F
Interior with Window Sky View (obstructed views)	4J
Interior with no window.....	4K

Cabin size: 17 m²

OCEAN VIEW

Ocean View.....	6A
-----------------	----

Cabin size: 22 m²

BALCONY

Extended Balcony.....	8A 8B 8C 8D 8E 8F 8J
Aft-View Extended Balcony.....	8M 8N
Premium Balcony.....	9B

Cabin size ranges from 22 m² to 25 m²

SUITE

Junior Suite.....	JS
Ocean Suite.....	OS
Grand Suite.....	GS
Extended Balcony Grand Suite.....	ES
Grand Vista Suite.....	GV

Cabin size ranges from 34 m² to 41 m²

CLOUD 9 SPA ACCOMMODATION

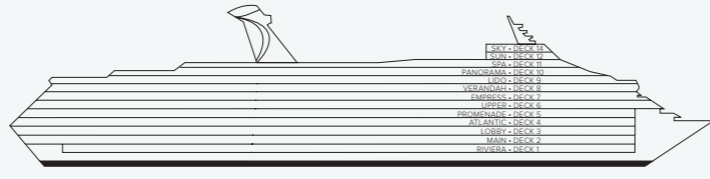
Interior.....	4S
Balcony.....	8P
Suite.....	SS

Cabin size ranges from 17 m² to 33 m²
Includes private access, special amenities and priority reservations at the Cloud 9 Spa.



DECK PLAN

CARNIVAL SPLENDOR™



CARNIVAL SPLENDOR

Gross Tonnage: 113,573; Length: 290 metres; Beam: 35 metres
 Cruising Speed: 21 knots; Guest Capacity: 3,948 (Full Guests Capacity)
 Total Staff: 1,150; Registry: Panama; Entered Service: 2008

Deck Plan is accurate at the time of printing and is subject to change.

CATEGORIES

- 1A Interior Upper/Lower
- PT Porthole
- 4A 4B 4C 4D 4E 4F 4G Interior
- 4J Interior with Picture Window (obstructed views)
- 6A 6B 6C Ocean View
- 6J Scenic Ocean View
- 6K Scenic Grand Ocean View
- 8A 8B 8C 8D 8E 8F Balcony
- 8M 8N Aft-View Extended Balcony
- 9C Premium Vista Balcony
- JS Junior Suite

- OS Ocean Suite
- GS Grand Suite
- CS Captain's Suite

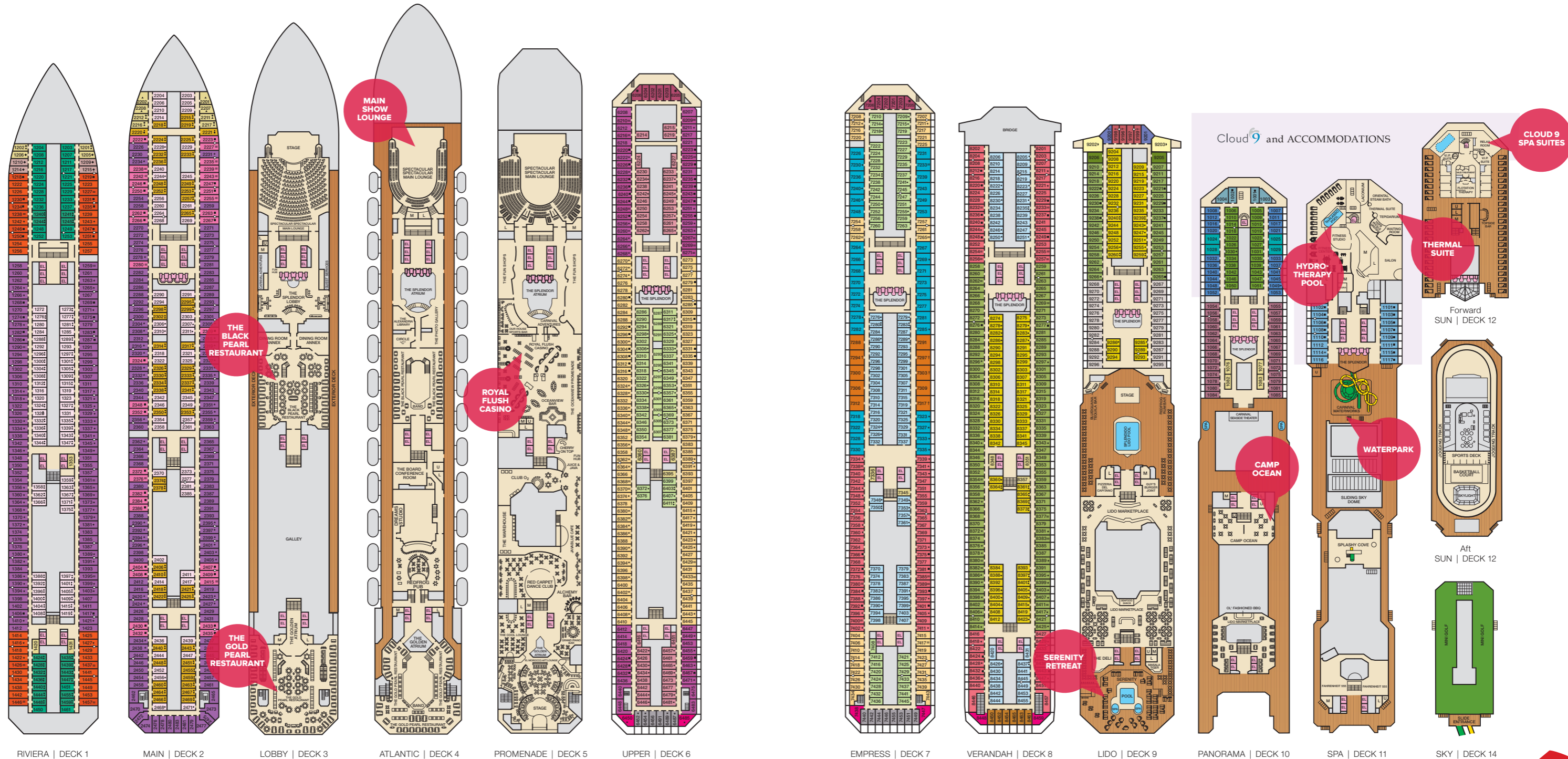
Spa Accommodation

Includes private access, special amenities and priority reservations at the Cloud 9 Spa.

- 4S Interior
- 6S Ocean View (obstructed views)
- 8P 8S Balcony
- SS Suite

SYMBOLS

- ▲ Twin Bed and Single Sofa Bed
- ★ 2 Twin Beds (convert to King) and Single Sofa Bed
- 2 Twin Beds (convert to King) and 1 Upper Pullman
- 2 Twin Beds (convert to King) and 2 Upper Pullmans
- 2 Twin Beds (convert to King), Single Sofa Bed and 1 Upper Pullman
- † 2 Twin Beds (convert to King) and Double Sofa Bed
- = 2 Twin Beds (convert to King), Single Sofa Bed with Convertible Bunk
- < Interconnecting staterooms (ideal for families and groups of friends)
- * Twin Beds (do not convert to King)
- U Unisex Wheelchair Accessible Restroom
- ◆ Stateroom with 2 Porthole Windows
- Ⓜ All accommodation is non-smoking



CARNIVAL SPLENDOR™ INTERCONNECTING STATEROOMS

Perfect for families and groups, Carnival Splendor™ has 246 interconnecting staterooms accommodating for 4, 5, 6, 7 and 8 guests.



FAMILIES OF 4			
4A – INTERIOR		4A – INTERIOR	
Stateroom 1217	2	+	Stateroom 1221
Stateroom 1249	2	+	Stateroom 1253
4B – INTERIOR		4B – INTERIOR	
Stateroom 2264	2	+	Stateroom 2268
Stateroom 2357	2	+	Stateroom 2361
4C – INTERIOR		4C – INTERIOR	
Stateroom 6295	2	+	Stateroom 6297
Stateroom 6299	2	+	Stateroom 6301
Stateroom 6303	2	+	Stateroom 6305
Stateroom 6369	2	+	Stateroom 6373
4D – INTERIOR		4D – INTERIOR	
Stateroom 7245	2	+	Stateroom 7247
Stateroom 7429	2	+	Stateroom 7433
4E – INTERIOR		4E – INTERIOR	
Stateroom 8215	2	+	Stateroom 8219
Stateroom 8445	2	+	Stateroom 8449
Stateroom 9232	2	+	Stateroom 9236
Stateroom 9289	2	+	Stateroom 9293
4S – INTERIOR		4S – INTERIOR	
Stateroom 1014	2	+	Stateroom 1018
6A – OCEANVIEW		6A – OCEANVIEW	
Stateroom 1298	2	+	Stateroom 1302
Stateroom 1299	2	+	Stateroom 1303
Stateroom 1350	2	+	Stateroom 1352
Stateroom 1355	2	+	Stateroom 1357
Stateroom 1376	2	+	Stateroom 1378
Stateroom 1385	2	+	Stateroom 1387
Stateroom 1322	2	+	Stateroom 1326
Stateroom 1338	2	+	Stateroom 1342
Stateroom 1430	2	+	Stateroom 1434
Stateroom 1441	2	+	Stateroom 1445

FAMILIES OF 4			
6B – OCEANVIEW		6B – OCEANVIEW	
Stateroom 2274	2	+	Stateroom 2276
Stateroom 2275	2	+	Stateroom 2277
Stateroom 2292	2	+	Stateroom 2296
Stateroom 2293	2	+	Stateroom 2297
Stateroom 2340	2	+	Stateroom 2344
Stateroom 2343	2	+	Stateroom 2347
Stateroom 2364	2	+	Stateroom 2366
Stateroom 2367	2	+	Stateroom 2369
Stateroom 2442	2	+	Stateroom 2446
Stateroom 2445	2	+	Stateroom 2449
8A – BALCONY		8A – BALCONY	
Stateroom 6275	2	+	Stateroom 6277
Stateroom 6437	2	+	Stateroom 6439
8B – BALCONY		8B – BALCONY	
Stateroom 7257	2	+	Stateroom 7261
Stateroom 7254	2	+	Stateroom 7258
Stateroom 7363	2	+	Stateroom 7365
Stateroom 7354	2	+	Stateroom 7356
Stateroom 7414	2	+	Stateroom 7418
Stateroom 7422	2	+	Stateroom 7426
Stateroom 7423	2	+	Stateroom 7427
Stateroom 7431	2	+	Stateroom 7435
8C – BALCONY		8C – BALCONY	
Stateroom 8203	2	+	Stateroom 8207
Stateroom 8204	2	+	Stateroom 8208
Stateroom 8261	2	+	Stateroom 8263
Stateroom 8323	2	+	Stateroom 8327
8D – BALCONY		8D – BALCONY	
Stateroom 9253	2	+	Stateroom 9257
Stateroom 9282	2	+	Stateroom 9284
Stateroom 1037	2	+	Stateroom 1041
Stateroom 1056	2	+	Stateroom 1058
Stateroom 1073	2	+	Stateroom 1075

FAMILIES OF 5			
6A – OCEANVIEW		6A – OCEANVIEW	
Stateroom 1265	3	+	Stateroom 1267
Stateroom 1416	3	+	Stateroom 1418
Stateroom 1427	3	+	Stateroom 1429
6B – OCEANVIEW		6B – OCEANVIEW	
Stateroom 2230	3	+	Stateroom 2234
Stateroom 2300	3	+	Stateroom 2304
Stateroom 2301	3	+	Stateroom 2305
Stateroom 2332	3	+	Stateroom 2336
Stateroom 2335	3	+	Stateroom 2339
Stateroom 2356	3	+	Stateroom 2360
Stateroom 2359	3	+	Stateroom 2363

FAMILIES OF 5			
8B – BALCONY		8B – BALCONY	
Stateroom 7207	3	+	Stateroom 7211
Stateroom 7208	3	+	Stateroom 7212
8C – BALCONY		8C – BALCONY	
Stateroom 8211	3	+	Stateroom 8217
Stateroom 8406	3	+	Stateroom 8410
Stateroom 8417	3	+	Stateroom 8421
Stateroom 8418	3	+	Stateroom 8422
Stateroom 8429	3	+	Stateroom 8433
Stateroom 8435	3	+	Stateroom 8439

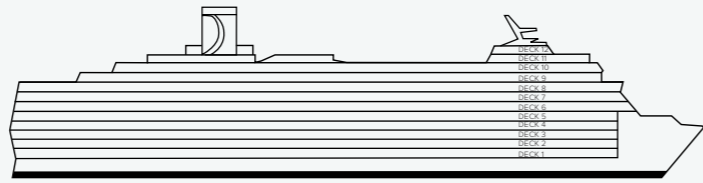
FAMILIES OF 6			
4A – INTERIOR		6S OCEANVIEW	
Stateroom 1214	2	+	Stateroom 1218
Stateroom 1215	2	+	Stateroom 1219
64 – OCEANVIEW		6A – OCEANVIEW	
Stateroom 1275	3	+	Stateroom 1279
6A – OCEANVIEW		6A – OCEANVIEW	
Stateroom 1264	3	+	Stateroom 1266
Stateroom 1314	3	+	Stateroom 1318
Stateroom 1317	3	+	Stateroom 1321
Stateroom 1325	3	+	Stateroom 1329
Stateroom 1341	3	+	Stateroom 1345
Stateroom 1380	3	+	Stateroom 1382
Stateroom 1389	3	+	Stateroom 1391
Stateroom 1390	3	+	Stateroom 1394
Stateroom 1399	3	+	Stateroom 1403
6S – OCEANVIEW		6B – OCEANVIEW	
Stateroom 2222	3	+	Stateroom 2226
6B – OCEANVIEW		6B – OCEANVIEW	
Stateroom 2316	3	+	Stateroom 2320
Stateroom 2319	3	+	Stateroom 2323
Stateroom 2390	3	+	Stateroom 2392
6B – OCEANVIEW		6B – OCEANVIEW	
Stateroom 2394	3	+	Stateroom 2396
Stateroom 2395	3	+	Stateroom 2397
Stateroom 2399	3	+	Stateroom 2401
Stateroom 2420	3	+	Stateroom 2424
Stateroom 2423	3	+	Stateroom 2427
6B – OCEANVIEW		64 – OCEANVIEW	
Stateroom 2231	3	+	Stateroom 2235
8A – BALCONY		84 – BALCONY	
Stateroom 6283	3	+	Stateroom 6285
8A – BALCONY		8A – BALCONY	
Stateroom 6272	3	+	Stateroom 6274
Stateroom 6362	3	+	Stateroom 6364
Stateroom 6389	3	+	Stateroom 6391
86 – EXTENDED BALCONY		8C – BALCONY	
Stateroom 8212	3	+	Stateroom 8216
Stateroom 8276	3	+	Stateroom 8272
Stateroom 8277	3	+	Stateroom 8273
6J – SCENIC OCEANVIEW		6J – SCENIC OCEANVIEW	
Stateroom 9197	3	+	Stateroom 9199

FAMILIES OF 7			
64 – OCEANVIEW QUAD		6A – OCEANVIEW	
Stateroom 1274	4	+	Stateroom 1278
Stateroom 1406	4	+	Stateroom 1410
Stateroom 1417	4	+	Stateroom 1421

FAMILIES OF 8			
64 – OCEANVIEW		64 – OCEANVIEW	
Stateroom 1230	4	+	Stateroom 1234
Stateroom 1231	4	+	Stateroom 1235
Stateroom 1246	4	+	Stateroom 1250
Stateroom 1247	4	+	Stateroom 1251
Stateroom 1282	4	+	Stateroom 1286
Stateroom 1283	4	+	Stateroom 1287
6S – OCEANVIEW		6S – OCEANVIEW	
Stateroom 2223	4	+	Stateroom 2227
Stateroom 2246	4	+	Stateroom 2250
Stateroom 2247	4	+	Stateroom 2251
Stateroom 2262	4	+	Stateroom 2266
Stateroom 2263	4	+	Stateroom 2267
Stateroom 2404	4	+	Stateroom 2408
Stateroom 2407	4	+	Stateroom 2409
Stateroom 2430	4	+	Stateroom 2432
Stateroom 2433	4	+	Stateroom 2435
6J – SCENIC OCEANVIEW		6J – SCENIC OCEANVIEW	
Stateroom 9196	4	+	Stateroom 9198
8S – CLOUD 9		8S – CLOUD 9	
Stateroom 1104	4	+	Stateroom 1106
Stateroom 1108	4	+	Stateroom 1110

DECK PLAN

CARNIVAL LUMINOSA™



CARNIVAL LUMINOSA

Gross Tonnage: 92,720; Length: 293 metres; Beam: 32 metres
 Cruising Speed: 22 knots; Guest Capacity: 2,826 (Full Guests Capacity)
 Total Staff: 926; Registry: The Bahamas; Entered Service: 2009

Deck Plan is accurate at the time of printing and is subject to change.

CATEGORIES

- 4A 4B 4C 4D 4E 4F Interior
- 4J Interior with Picture Window (obstructed views)
- 4K Interior with Window (obstructed views)
- 6A Ocean View
- 8A 8B 8C 8D 8E 8F Balcony
- 8J Extended Balcony
- 8M 8N Aft-View Extended Balcony
- 9B Premium Balcony
- JS Junior Suite
- OS Ocean Suite

- GS Grand Suite
- ES Extended Balcony Grand Suite
- GV Grand Vista Suite

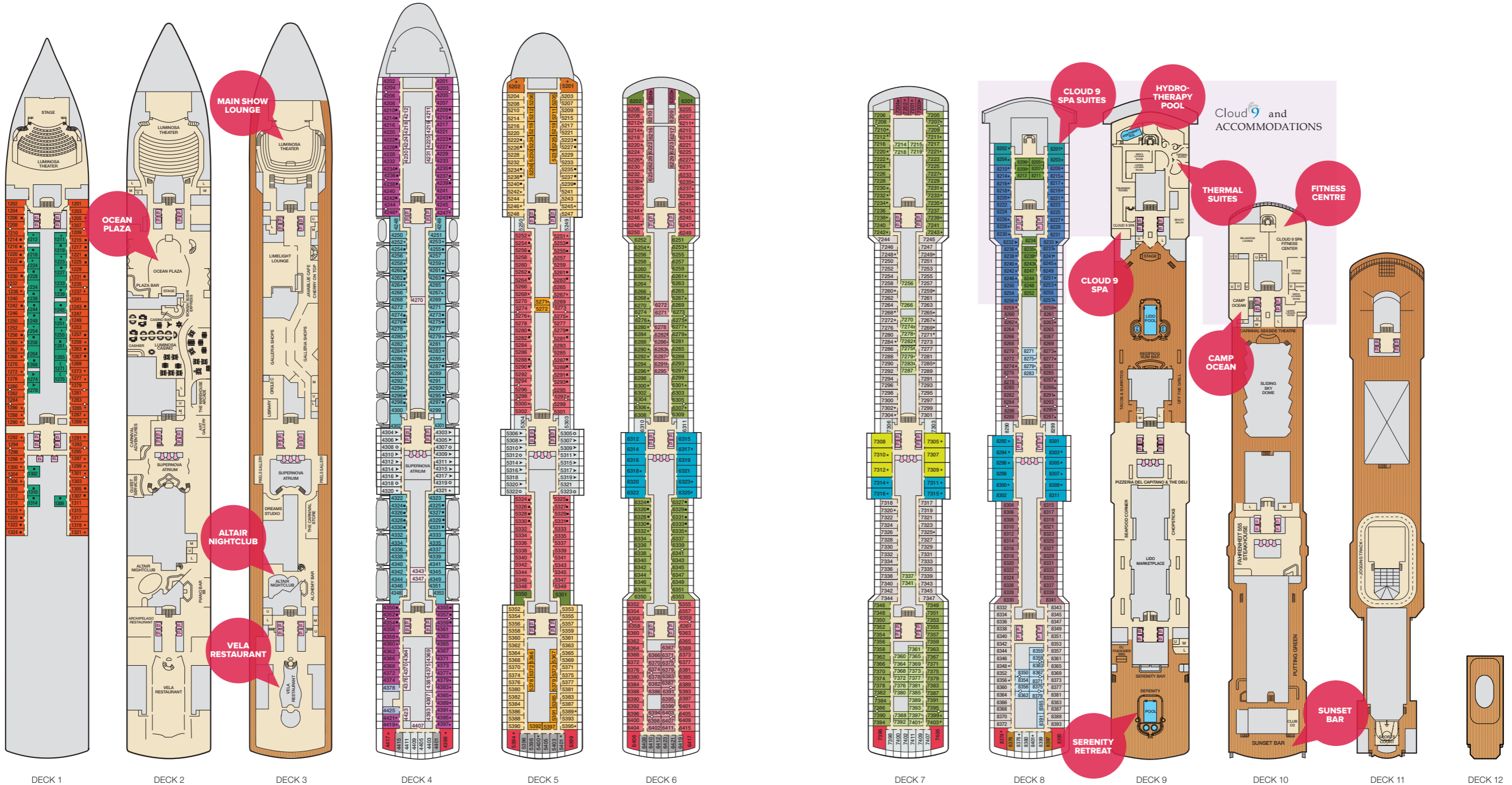
Spa Accommodation

Includes private access, special amenities and priority reservations at the Cloud 9 Spa.

- 4S Interior
- 8P Balcony
- SS Suite

SYMBOLS

- King Bed (does not convert to Twin Beds)
- ★ 2 Twin Beds (convert to King) and Single Sofa Bed
- 2 Twin Beds (convert to King) and 1 Upper Pullman
- ⊙ King Bed (does not convert to Twin Beds) and Single Sofa Bed
- ⊖ King Bed (does not convert to Twin Beds) and 1 Upper Pullman
- 2 Twin Beds (convert to King) and 2 Upper Pullmans
- 2 Twin Beds (convert to King), Single Sofa Bed and 1 Upper Pullman
- ◁ Interconnecting staterooms (ideal for families and groups of friends)
- ★ Twin Beds (do not convert to King)
- U Unisex Wheelchair Accessible Restroom
- ⊗ All accommodation is non-smoking



CARNIVAL LUMINOSA™

INTERCONNECTING STATEROOMS

Perfect for families and groups, Carnival Luminosa™ has 106 interconnecting staterooms accommodating for 4, 5, and 8 guests.

FAMILIES OF 4

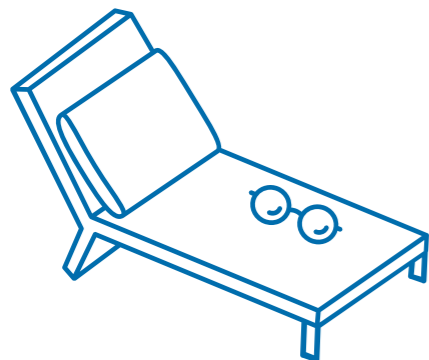
4D – INTERIOR		4D – INTERIOR	
Stateroom 6371	👤👤 +	Stateroom 6375	👤👤
Stateroom 6374	👤👤 +	Stateroom 6378	👤👤
Stateroom 6387	👤👤 +	Stateroom 6391	👤👤
Stateroom 6394	👤👤 +	Stateroom 6398	👤👤
Stateroom 6403	👤👤 +	Stateroom 6407	👤👤
4F – INTERIOR		4F – INTERIOR	
Stateroom 8350	👤👤 +	Stateroom 8354	👤👤
Stateroom 8358	👤👤 +	Stateroom 8362	👤👤
Stateroom 8359	👤👤 +	Stateroom 8363	👤👤
Stateroom 8367	👤👤 +	Stateroom 8371	👤👤
Stateroom 8375	👤👤 +	Stateroom 8379	👤👤
6A – OCEANVIEW		6A – OCEANVIEW	
Stateroom 1207	👤👤 +	Stateroom 1209	👤👤
Stateroom 1208	👤👤 +	Stateroom 1210	👤👤
Stateroom 1279	👤👤 +	Stateroom 1281	👤👤
Stateroom 1280	👤👤 +	Stateroom 1282	👤👤
Stateroom 1293	👤👤 +	Stateroom 1295	👤👤
Stateroom 1294	👤👤 +	Stateroom 1296	👤👤
8A – BALCONY		8A – BALCONY	
Stateroom 4203	👤👤 +	Stateroom 4205	👤👤
Stateroom 4204	👤👤 +	Stateroom 4206	👤👤
8C – BALCONY		8C – BALCONY	
Stateroom 5294	👤👤 +	Stateroom 5296	👤👤
Stateroom 6356	👤👤 +	Stateroom 6358	👤👤
Stateroom 6359	👤👤 +	Stateroom 6361	👤👤
8D – BALCONY		8D – BALCONY	
Stateroom 6336	👤👤 +	Stateroom 6338	👤👤
Stateroom 6339	👤👤 +	Stateroom 6341	👤👤
Stateroom 7382	👤👤 +	Stateroom 7384	👤👤
Stateroom 7386	👤👤 +	Stateroom 7390	👤👤
8F – BALCONY		8F – BALCONY	
Stateroom 8276	👤👤 +	Stateroom 8278	👤👤
Stateroom 8284	👤👤 +	Stateroom 8286	👤👤

FAMILIES OF 5

6A – OCEANVIEW		6A – OCEANVIEW	
Stateroom 1232	👤👤 +	Stateroom 1236	👤👤👤
Stateroom 1235	👤👤 +	Stateroom 1237	👤👤👤
Stateroom 1283	👤👤 +	Stateroom 1285	👤👤👤
Stateroom 1284	👤👤 +	Stateroom 1286	👤👤👤
Stateroom 1301	👤👤👤 +	Stateroom 1303	👤👤
Stateroom 1304	👤👤 +	Stateroom 1306	👤👤👤
8A – BALCONY		8A – BALCONY	
Stateroom 4244	👤👤 +	Stateroom 4246	👤👤👤
Stateroom 4245	👤👤 +	Stateroom 4247	👤👤👤
8C – BALCONY		8C – BALCONY	
Stateroom 5273	👤👤 +	Stateroom 5275	👤👤👤
Stateroom 5274	👤👤 +	Stateroom 5276	👤👤👤
Stateroom 5297	👤👤👤 +	Stateroom 5299	👤👤
Stateroom 5298	👤👤 +	Stateroom 5300	👤👤👤
8D – BALCONY		8D – BALCONY	
Stateroom 6304	👤👤 +	Stateroom 6306	👤👤👤
Stateroom 6305	👤👤 +	Stateroom 6307	👤👤👤
Stateroom 6273	👤👤 +	Stateroom 6275	👤👤👤
Stateroom 6274	👤👤 +	Stateroom 6276	👤👤👤
Stateroom 7207	👤👤👤 +	Stateroom 7209	👤👤
Stateroom 7208	👤👤 +	Stateroom 7210	👤👤👤
Stateroom 7395	👤👤 +	Stateroom 7399	👤👤👤
8F – BALCONY		8F – BALCONY	
Stateroom 8260	👤👤 +	Stateroom 8262	👤👤👤
Stateroom 8261	👤👤 +	Stateroom 8263	👤👤👤
Stateroom 8293	👤👤 +	Stateroom 8295	👤👤👤

FAMILIES OF 8

8A – BALCONY		8A – BALCONY	
Stateroom 4236	👤👤👤 +	Stateroom 4238	👤👤👤👤
Stateroom 4237	👤👤👤 +	Stateroom 4239	👤👤👤👤
Stateroom 4352	👤👤👤 +	Stateroom 4354	👤👤👤👤
Stateroom 4357	👤👤👤 +	Stateroom 4359	👤👤👤👤



MORE INFORMATION

Ambulatory and fully accessible staterooms

These staterooms are designed for guests who may utilise a wheelchair or similar assistance device.

Ambulatory staterooms include features such as grab bars and shower seats in the bathrooms, whereas wheelchair accessible staterooms include features such as turning space, accessible routes throughout the stateroom and accessible bathrooms.

In order to book an ambulatory and fully accessible stateroom please follow the below procedure:

When notified of any special requirement, code the booking with the appropriate guest comment code (for ambulatory and fully accessible please use: W). Forms will be generated automatically based on guest comment code. The form(s) will be sent based on the email address in the Guest Information tab. If there is no email address for the guest and they are booked through a travel agency, forms will be sent to the travel agency email address on file. If you need to send additional or replacement forms, please use MKMFAX and send to access@carnival.com

Once the booking is completed, please let the guest know that a Guest Access representative will contact them to discuss their special requirements.

Preferred dining times onboard

There are two dinner seatings; early at 5.30pm and late at 7.45pm, as well as a third option; 'Your Time' dining, allowing guests to dine anywhere from 5.15pm-9pm.

Agents who have large group bookings or family bookings with young children should opt to select a specific seating time; the early or the late seating, as this can guarantee that the group booking will be seated together every evening for the duration of the cruise.

Linking bookings for dining purposes using GoCCL:

- You can link groups for dining parties up to 20 bookings
- All dining times must be selected as the same
- Only need to use one booking to link all travelling party together

1. Open booking via 'Manage Booking' in GoCCL.
2. Select 'Modify Booking' from tabs on bottom of page.
3. Once new page loads, you will see your client's preferred dining time that is selected. Select 'Change Dining'.
4. If required: to amend the current dining time, simply select a new option from the drop down. If your client's preference is unavailable, select 'Preferred Waitlist Dining Time'.
5. Under 'Additional Reservation Numbers', add the booking numbers you wish to cross reference. [Can add up to 20 references, by selecting '+ More Bookings'].
6. Select 'Continue to Review' to proceed and save.

Guest Access

It is important that Carnival be notified of any special medical, physical or other requirements of guests at the time of booking. Please direct them to email us at: access@carnival.com

Carnival's Guest Access department can help assist guests who have specific dietary requirements; need wheelchair access whilst onboard, need repository assistance onboard, individuals with disabilities, etc.

We encourage you to instruct guests to email Guest Access department as soon as their booking has been paid in full, to ensure they have a positive onboard experience.

KultureCity

All of Carnival's guest-facing crew aboard these ships have been trained to understand and help a guest with a sensory/cognitive need. The Guest Services and Youth Staff are ready to assist adults and children with sensory-related questions or issues relating to conditions such as Autism, ADHD, Down Syndrome, PTSD, etc. KultureCity Sensory Bags can be checked out for the duration of the cruise (on a complimentary and first-come, first-served basis) by visiting Guest Services or one of our Youth programs. Each bag contains items to help calm, relax and manage sensory overload, and include comfortable noise-cancelling headphones, fidget tools, a visual feeling thermometer and a KultureCity VIP lanyard, to help the staff easily identify a guest.

Minimum age to travel for cruises departing from/ returning to an Australian port

We welcome children 12 months and over to cruise with us for international cruises, and children 6 months and over for domestic cruises. We are unable to accommodate infants under 12 months for international or transoceanic cruises, cruises with remote itineraries and cruises with more than two (2) consecutive sea days, and under 6 months for domestic cruises due to limited neo-natal facilities on board and at ports of call.

Stateroom Age Requirements To ensure there is suitable supervision, there needs to be at least one guest 18 years or older in each stateroom. However, to accommodate families cruising together, children may occupy a separate stateroom to their parent/legal guardian, providing one child is 16 years or over.

Please note for sailings departing outside of Australia, different age restrictions apply.



CARNIVAL GROUPS CHECK LIST

CREATING THE GROUP

- Affinity Group — family, sports or special interest group
- Open Promo — promotional or marketing activity
- Holiday Sailings — travelling over holidays, like Christmas, New Years or Easter
- Have I selected a minimum 8 cabins to create the group?
- Have I included fun points (amenities) into my price points, if yes how many _____.
- Pin number for my group is _____.
*not mandatory but recommended for affinity groups.

MANAGING THE GROUP

- Have I reached the minimum 5 cabins to allocate my fun points (amenities).
- What date do I need to allocate my fun points (amenities) by _____.
- What date do I need to need to cancel my unused price points by _____.

* If you do not cancel unused price points by this date, the group has not met minimum payment requirements and will cancel, this includes deposited and fully paid bookings.

- Do all my cabins appear within the guest list?
*if not then please check you have booked the correct rate code via individual stateroom.





Australia 13 31 94 | goccl.com.au • New Zealand 0800 442 095 | goccl.co.nz •  CARNIVAL FUN ZONE

Carnival plc trading as Carnival Cruise Line • L5, 465 Victoria Avenue, Chatswood NSW 2067 • ABN 23 107 998 443

© 2024 Carnival Cruise Line. All rights reserved. Ship's Registry: Carnival Splendor™: Panama; Carnival Luminosa™: The Bahamas. Printed in Australia 03/2024
Please note that details are subject to change without notice, please refer to goccl.com.au or goccl.co.nz for the latest information.